

# ***ECOSHHEET***

***PILIHAN BERKUALITAS & EKONOMIS***

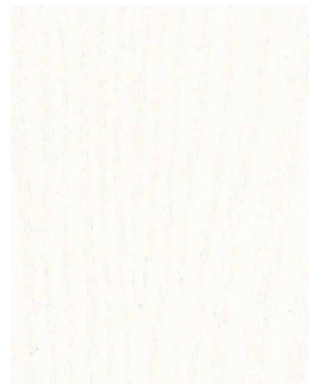




# WOODGRAIN

Thickness 0.2mm | Width 1250mm

Thickness 0.2mm | Width 1250mm



ES 301 W



ES 302 W



ES 303 W



ES 316 W



ES 317 W



ES 318 W



ES 319 W



ES 304 W



ES 305 W



ES 306 W



ES 307 W



ES 320 W



ES 321 W



ES 322 W



ES 323 W



ES 308 W



ES 309 W



ES 310 W



ES 311 W



ES 324 W



ES 325 W



ES 326 W



ES 327 W



ES 312 W



ES 313 W



ES 314 W



ES 315 W



ES 328 W



ES 329 W



ES 330 W



ES 331 W



# WOODGRAIN

Thickness 0.2mm | Width 1250mm



ES 332 W



ES 333 W



ES 334 W



ES 335 W



ES 336 W



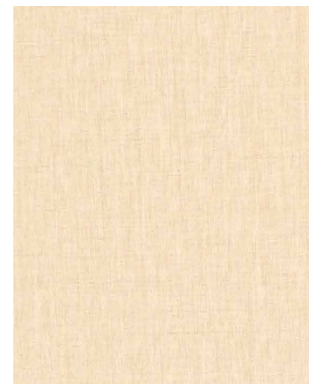
ES 337 W



# PATTERN



ES 201 M



ES 202 M



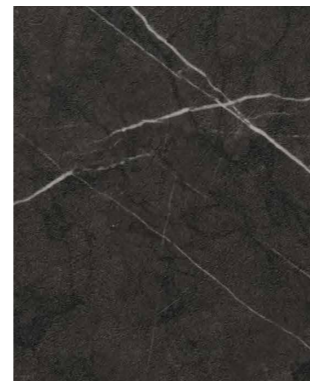
ES 203 M



ES 204 M



ES 205 M

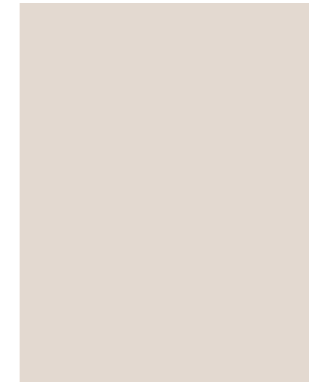


ES 206 M



# SOLID

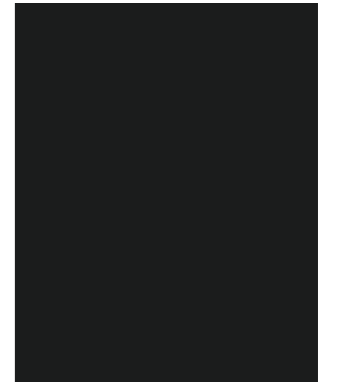
Thickness 0.2mm | Width 1250mm



ES 103 A



ES 104 C



ES 105 A



ES 106 C



ES 107 C



ES 108 C



ES 109 C



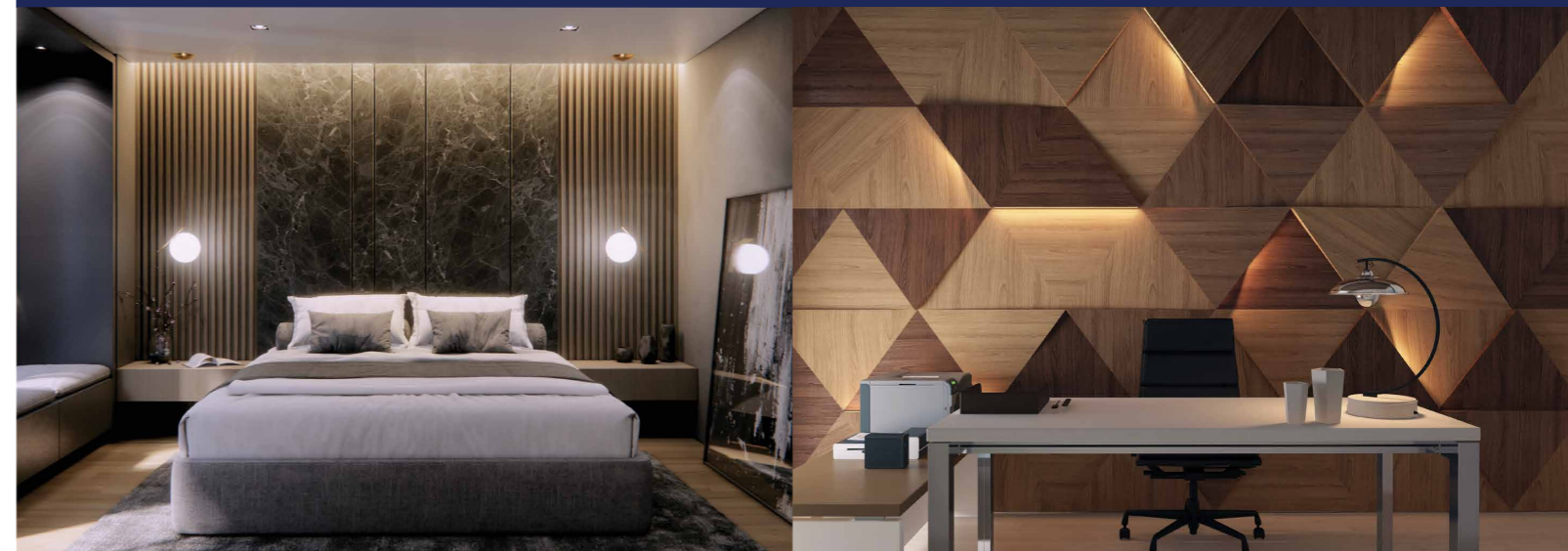
ES 101 A



ES 101 G



ES 102 A





## TECHNICAL DATA

PROPERTY	UNIT	REQUIREMENT	RESULT
Foil Thickness	mm	0.2 ± 0.02mm	Pass
Foil Width	mm	1250 ± 5mm	Pass
Printing Width	%	± 1-5 %	Pass
Tensile Strength	MPa	18	Pass
Vicat Softening Point	°C	180° - 200°C	Pass
Stain Resistance	Appearance	No change of surface after 24hr exposure (juice, vinegar, neutrality cleaner)	Pass
Light Stability	Appearance	No change of appearance for at least 3 years (Interior use and under ideal condition)	Pass
Hardness	-	95 - 100 based on Shore A test	Pass
Form Stability	Appearance	No visual change of gloss in elevated temperature of 120°C within 30 seconds	Pass
Thermostability Emboss	Appearance	No change of emboss with 100 ± 5°C Glycerin for 30 seconds	Pass
Density	g/cm <sup>3</sup>	1.35 - 1.45 g/cm <sup>3</sup>	Pass
Gloss	Gloss Level	+2.0 tolerance at 60° light angle	Pass
Surface Defects	Appearance	None or slight pin hole, flow mark or dark material	Pass

- ECO PVC Sheet are recommended for interior use only.
- The samples shown are only indicative of the color shade and textures.
- Customers are advised to reconfirm the color at the time of ordering.
- Please inspect all products purchased before installation.

### CUSTOMER SERVICE

☎ 021-3971-8600

☎ 0811-905-6868

📍 ecolaminates

[www.eco-laminates.co.id](http://www.eco-laminates.co.id)